



**Escambia County
School District**
Escambia County Florida



Maintenance Department

Hurricane Preparedness Plan



Hurricane Ivan – September 16, 2004



Hurricane Dennis – July 10, 2005



Hurricane Katrina – August 29, 2005

PURPOSE

The purpose of the Emergency Preparedness Plan is to have a procedure for the Maintenance Services Department that can be implemented immediately in the event a disaster strikes the area. This plan will save valuable time in making decisions and preparations for an impending disaster as well as in the recovery process that follows. Employees have been chosen as Damage Assessment Team Members and duties have been established and assigned. All employees will be able to react in a positive manner by knowing beforehand their individual responsibilities and the total process involved in the damage assessment and recovery efforts.

The plans for damage assessment and recovery can be used after any type of disaster. The repair and renovations of facilities would be handled using the same procedures no matter how they had been damaged.

We would like to thank Bill Searson of Charleston County, South Carolina; Robert Goldberg, Dade County, Florida; and Hurricanes Erin, Opal and Georges for their assistance in the development of this plan. We have gained additional knowledge from Hurricane Ivan (September 16, 2004), Hurricane Dennis (July 10, 2005) and Hurricane Katrina (August 29, 2005) that led to numerous improvements and revisions to our plan.

We would like to give special thanks to our former Directors, Ted A. Kirchharr and Mark R. Pursell for their contributions during the initial phases of development of our plan.

Charles M. Peterson, Director – Maintenance Services

Gregory L. Gibbs, Assistant Director – Maintenance Services



Escambia County
School District

Escambia County Florida



Maintenance Department

Hurricane Preparedness Plan

Chapter One

Preparation for Hurricane Season

MAINTENANCE SERVICES DEPARTMENT HURRICANE PLAN

The following sequence of events is to take place in anticipation of and preparation for an approaching hurricane:

PREPARATION FOR HURRICANE SEASON – LEVEL V (June 1)

- A. Review and update Maintenance Department's Hurricane Plan.
 1. Review and implement improvements/changes to plan;
 2. FEMA Forms, Repair Schedules, etc.;
 3. Shelter Information (Division Chief – Security, Safety & Emergency Operations)
 4. Emergency Phone Chain and team lists (May 1);
 5. Maintenance Protective Measures Teams list (May 1);
 6. Emergency Custodial list (May 1);
 7. CDL list (May 1).

- B. Enter into annual agreement for post storm tree and debris removal and fencing repair.

- C. Acquire update on asbestos locations from Facilities Planning broken out by school to be included in the Protective Measures Teams' packages.

- D. The Director – Maintenance Services will contact the following utilities providers to confirm our priorities, i.e., primary shelter locations, school district command centers and locations with district owned wastewater treatment facilities and district maintained lift stations:
 - Bratt-Davisville Water Works
 - Central Water Works, Inc.
 - Town of Century
 - Cottage Hill Water Works, Inc.
 - Emerald Coast Utilities Authority
 - Escambia River Electric Coop., Inc./Walnut Hill Water Works
 - Farm Hill Utilities, Inc.
 - Gulf Power
 - Molino Utilities, Inc.
 - Peoples Water Service

- E. Review Emergency Supplies lists;

- F. Contact natural gas providers to discuss post-storm procedures;

- G. Identify and review internal forms and procedures for cost recovery;

- H. Check all power equipment, saws, portable generators, etc., for proper operation;

- I. Acquire updated list of schools with shutters from Facilities Planning and build email group;

PREPARATION FOR HURRICANE SEASON – LEVEL V (June 1) - Continued

- J. Check shutters, perform preventive maintenance and contract for repairs if needed (to be done the 3rd week of March of each year);
- K. Prepare Protective Measures Teams' packages and keep in the Maintenance office until needed. Contents of the packages will include the following informational supplies as well as equipment required to complete the inspections (see page II-9 for supplies checklist):
 - 1. Protective Measures Checklist and Instructions
 - 2. Protective Measures Teams List and Contact Information
 - 3. FISH Site Plans
 - 4. Asbestos Location Information

MAINTENANCE SERVICES DEPARTMENT HURRICANE PLAN

PRE-STORM ACTIONS LEVEL IV (Hurricane Force Winds Expected Within 72 Hours)

- A. Meet with Protective Measures Teams and office staff to review information and provide further instruction.
- B. Inventory equipment, supplies and forms needed for disaster. Each shop supervisor will be responsible for performing shop inventory and reporting results to Director.
- C. Check communications and emergency equipment and top-off fuel tanks.
- D. Check operation of and fuel tanks for all emergency generators including those at the following schools:
 - Bailey Middle
 - Beulah Elementary
 - Blue Angels Elementary
 - J. E. Hall Center
 - Molino Park Elementary
 - Northview High
 - Pine Forest High
 - Ransom Middle
 - George Stone Vocational
 - Transportation Bus Garage
 - Warehouse
 - Washington High
 - Weis Elementary
 - Woodham High
- E. Acquire barricade tape for Protective Measures Teams.

MAINTENANCE SERVICES DEPARTMENT HURRICANE PLAN

PRE-STORM ACTIONS LEVEL III (Hurricane Force Winds Expected Within 48 Hours)

- A. Inform key personnel to remain available and provide post storm phone numbers and addresses. Communicate how employees are to notify department of location changes.
- B. Begin preparations for the safety of personal property and family members.
- C. Truck gas tanks and stock to be checked for adequate supplies and equipment.
- D. Purchase additional supplies needed for repairs. See List. Contact vendors for aerial equipment rental; tree and debris removal; generators; Architect/Engineer services; Electrical; Plumbing; Roofing; Mechanical; glass contractor; fill dirt and environmental.
- E. Shutter Superintendent's office if needed and/or requested.
- F. Make arrangements with Transportation Department for fueling generators and chain saws during and after storm.
- G. Contact Information Technology Department, specifically Systems Communications and Operations to ensure proper coding (H) is established for Hurricane Recovery work orders and printouts.
- H. Activate Shop Leaders' cellular service.

MAINTENANCE SERVICES DEPARTMENT HURRICANE PLAN

PRE-STORM ACTIONS LEVEL II (Hurricane Force Winds Expected Within 24 Hours)

- A. Notify all Supervisors and office staff of status, keep radios on, have spare battery and vehicle charger.
- B. Secure all outside equipment and facilities to prevent damage.
- C. Secure all interior items to prevent water damage using plastic bags or covers over computers, copy machines, printers, files, etc.
- D. Back up and save all computer information.
- E. Listen to WCOA 1370 AM and WUWF 88.1 FM for notices from Superintendent concerning School District Personnel.
- F. Ensure Superintendent's office to specifically mention all Maintenance Department personnel when giving instructions regarding returning to work.
- G. Contact Gulf Power to confirm priority listing.
- H. Notify all employees of tentative time to return to work and annual leave status.
- I. Provide Assistant Superintendent with Chain of Command, telephone, radio, cell phone, and alternative location lists.
- J. Acquire approval for Protective Measures Teams Representatives to take work trucks home. Offer assistance to deliver personal vehicles.

MAINTENANCE SERVICES DEPARTMENT HURRICANE PLAN

PRE-STORM ACTIONS LEVEL I (Hurricane Force Winds Expected Within 12 Hours)

- A. All facilities not designated as shelters are secured and evacuated.



Escambia County
School District

Escambia County Florida



Maintenance Department

Hurricane Preparedness Plan

Chapter Two

Protective Measures and Recovery Plan

PROTECTIVE MEASURES AND RECOVERY PLAN

MAINTENANCE CONTROL CENTER

A control center for all Maintenance Operations must be established. First choice will be the Maintenance Office, second choice will be the Warehouse and George Stone Vocational Center will be considered a contingency site. Two-way radio communications will be required as well as telephone, if possible. The center will be manned by the Director – Maintenance Services and the Assistant Director – Maintenance Services.

WORK ORDERS

All storm related work will be tracked using the Daily Activity Report (see pages III-5 and III-6). During the initial Recovery Stage, no individual work orders will be kept. Once it is possible, individual work orders will be issued and marked with the “H” (Hurricane) code. The location of the work performed, including the building number is critical to any future cost recovery. The work should fall into one of 3 broad FEMA categories: Category A – Debris Clearance; Category B – Emergency Protective Measures; and Category E – Damaged Building and Equipment. A status report of open work orders will be on the Maintenance Department weekly work order report.

PROTECTIVE MEASURES TEAMS

There are seventeen Maintenance Protective Measures Teams (**PMT**) (see pages II-5 through II-7). Each team contains at least two members (maintenance employees) and each member is assigned an average of three facilities to inspect. The teams will use the Protective Measures Checklist (**PMC**) (see pages III-1 through III-4) included in the **PMT** packages to record damage information at each site indicating exact location of damage, i.e., room numbers, building numbers, etc. This process will be coordinated immediately once it is safe to return to work. The **PMT** will be responsible for inspecting the entire facility, including roofs. While **PMT** members are on site, all damaged trees and other hazards should be marked with barricade tape; damaged exhaust fans, vents, etc., should be marked with bright colored spray paint and the exact location of damage noted on the **PMC**. Each team member will radio major damage or high priority items to the Maintenance Operations Control Center. Once the inspections are complete, the **PMC** will be returned to the Maintenance Operations Control Center. Damages will then be assigned to a Damage Repair Team comprised of Maintenance employees for repair or forwarded to Facilities Planning for contacting contractors as may be needed.

PROTECTIVE MEASURES AND RECOVERY PLAN

DAMAGE REPAIR TEAMS

All Maintenance employees, except those assigned to Special Projects Crews, will be assigned to a Damage Repair Team. Priorities for Damage Repair Teams will be established in consultation with Curriculum and Instruction. These teams will perform the first echelon major repairs to secure any damaged facilities. This could include clearing trees and debris (trees and branches should be separated from building debris), boarding windows and doors, repairing roofing, sweeping buildings, etc. It should be pointed out that trees from our property that fall on private property are the responsibility of the private property owner. Individual crafts will conduct final and specialized work at a later time. All personnel capable are to report to the Maintenance Control Center immediately after the disaster for instructions. Teams will meet in Room 160 to go over procedures. Chuck Peterson and each shop supervisor will first secure the Hall Center, assess shop damage and make temporary repairs if necessary. Insure that tools and equipment acquired for storm related activities are marked with School District of Escambia County tag.

SPECIAL PROJECTS CREW

Members of the Grounds Crew, Locksmiths, and Electrician II's will not be assigned to a Damage Repair Team. The Grounds Crew will maintain readiness to be available for tree cutting, clearing and hauling using their heavy equipment. The Locksmiths and Electricians will be available to give assistance throughout the District. Other Supervisors will designate crews to handle trouble calls during initial recovery stage.

ACCOMODATIONS FOR OUT-OF-TOWN CREWS (Only to be used in a Category 4 or 5 Storm)

Assistance may be received from out-of-town school districts, etc. Accommodations for their welfare are essential. Gymnasiums best provide this need because of their size, restrooms, and showers.

The Ransom Middle School Gymnasium should be considered for this use. The crews should bring their own bedding (sleeping bags or cots), some food, lanterns, generators, etc. We may be asked to provide some food and bedding and should be prepared to furnish such items. Tate High School old Gym may be considered as a back-up facility for use should the need arise. Old Molino School as well as any other district facility and community churches should also be considered.

DISTRICT CUSTODIAL DEPARTMENT

As quickly as possible, the district Custodial Department will assess condition of any water intrusion and assemble teams to prevent further damage. The Assistant Director – Custodial Services will secure a list of substitute Custodial Workers to be contacted for clean-up efforts.

PROTECTIVE MEASURES AND RECOVERY PLAN

FACILITIES PLANNING

Establish procedures for handling damage to leased facilities and any new construction.
Communicate roof assessment information to Facilities Planning.

WORK PRIORITIES FOR SHOPS

Heating & Air Shop (AC) – Address freezer/cooler units; entire schools without air conditioning and isolated air conditioning problems.

Carpentry Shop – Roof inspections and repair; repair windows.

Electrical Shop – Downed power lines; power outages.

Electronics Shop – Repair fire alarms and intercoms.

Grounds Crew Shop – Clear school sites of debris and assist other shops as needed.

Heating & Air Shop (HV) – Repair kitchen equipment and re-light pilot lights in conjunction with Energy Services of Pensacola.

Plumbing Shop – Repair broken water lines and damaged wastewater treatment plants.

Paint, Office Machine Repair and Window & Shade Shops – will assist other shops as needed.

MAINTENANCE DEPARTMENT
EMERGENCY TELEPHONE CHAIN

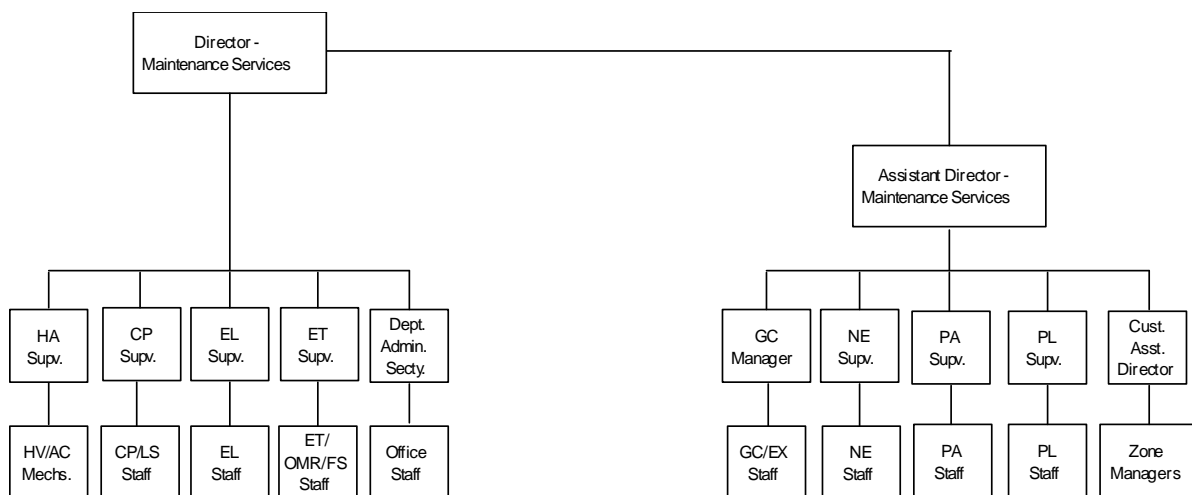
In order for the Maintenance Department to quickly and effectively relay information during the hurricane season or during any type of disaster, an internal telephone chain has been developed and will be used. This telephone chain will be used in addition to the local radio stations (WCOA-1360 AND WUWF-88.1) to share information that may be personal, confidential or of no concern to the general public. This telephone chain is intended to work in two ways, first to pass on information from the School District and the Director of Maintenance to all Maintenance Employees, and second, to receive information from all of our Maintenance Department Employees.

How the telephone chain will work:

Chuck Peterson, Director – Maintenance Services will contact the Supervisors of the Heating & Air, Carpentry, Electrical, Electronics Divisions and the Office Administrative Secretary. The Assistant Director – Maintenance Services will contact the Manager of the Grounds Crew and the Supervisors of the North End, Painting and Plumbing Divisions as well as the Assistant Director of Custodial Services. Each supervisor, manager, the Assistant Director of Custodial Services and the office Administrative Secretary will contact each one of their crew or office staff. Information will be shared, such as times to respond to calls, hazards in your community or neighborhood, personal damage you have incurred. The supervisors and office secretary will then call the Director and Assistant Director of Maintenance Services to relay any and all pertinent information.

In the event that a manager or supervisor cannot be reached, the Director – Maintenance Services will call the second in command and they in turn will attempt to contact the rest of their respective crews.

Maintenance Department Emergency Telephone Chain



Maintenance Department Protective Measures Teams Representative Assignments

2008 Hurricane Season

Team One

Area One

A

Wyatte Golson

A. V. Clubbs
A. K. Suter Elementary

B

Calvin Lampkin

Vernon McDaniel Administration
End User Building (Garden Street)
USO Building

Team Two

Area Two

A

Roger Phipps

McMillan Center
Pensacola High School
Gibson

B

J. D. Williams

Central Warehouse
Pickens

Team Three

Area Three

A

Mitch Mosley

J. E. Hall Center
J. E. Hall Center Annex

B

Rex McDowell

Spencer Bibbs Elementary
N. B. Cook Elementary

Team Four

Area Four

A

James White

O. J. Semmes Elementary
Cordova Park Elementary

B

Lewis Baswell & Thomas Ilias

Scenic Heights Elementary
Washington High School

Team Five

Area Five

A

Mike Nobles

Allie Yniestra Elementary
Hallmark Elementary

B

Terry Teets

Holm Elementary
Workman Middle

Team Six

Area Six

A

Shawn Ellis

Warrington Middle
Edgewater Elementary

B

Ray Brock

Brentwood Elementary
Brown Barge Middle

**Maintenance Department Protective Measures Teams
Representative Assignments**

2008 Hurricane Season

Team Seven

Area Seven

A

Eric Threatt

C. A. Weis Elementary
Montclair Elementary

B

Billy Taylor

Brownsville Middle
Oakcrest Elementary

Team Eight

Area Eight

A

Henry Harrison

Wedgewood Middle
Woodham Middle/Oasis Middle

B

Danny Heckman

Bellview Elementary
Bellview Middle

Team Nine

Area Nine

A

Dave Wright & David Parker (PA)

West Florida Technical High
George Stone Voc. Center

B

John Edwards & Rod Keller

Pine Forest High
Longleaf Elementary

Team Ten

Area Ten

A

Billy Bailey

Lincoln Park Elementary
Beulah Elementary

B

Don Reed

Ensley Elementary
Pine Meadow Elementary

Team Eleven

Area Eleven

A

Chuck Peterson, III

R. C. Lipscomb Elementary
Escambia Westgate Center
McArthur Elementary

B

John Miller

Ferry Pass Elementary
Ferry Pass Middle

Team Twelve

Area Twelve

A

Eddie Flynn

Environmental Center
Ransom Middle

B

Jeff Hadley & Daniel Clemmons

Tate High

**Maintenance Department Protective Measures Teams
Representative Assignments**

2008 Hurricane Season

Team Thirteen

Area Thirteen

A

Frank Golson

Carver/Century K-8
Old Carver

B

Bob Pilgrim

Northview High
Bratt Elementary
Byrneville Charter

C

Frank Golson

Ernest Ward Middle
North End Bus Garage

Team Fourteen

Area Fourteen

A

Alex Smith

Sid Nelson Center
Jim Allen Elementary

B

Mark Daniel

Old Molino
Molino Park Elementary

Team Fifteen

Area Fifteen

A

Gerald Richard

Warrington Elementary
Judy Andrews

B

Buddy Davis

Navy Point Elementary
ESEAL

Team Sixteen

Area Sixteen

A

Ed Domini

Hellen Caro Elementary
Bailey Middle School

B

Don Darbonne

Blue Angels Elementary
Pleasant Grove Elementary

Team Seventeen

Area Seventeen

A

David Parker (PL) & Charlie Freeman

Escambia High
Myrtle Grove Elementary

B

Leonard Smith

Sherwood Elementary
West Pensacola Elementary

Alternates: Remaining
Employees
On Extra Duty
Roster

Specific Area Duties: Eddie Suggs
Vince Childers

Supervisors will be back up.

MAINTENANCE DEPARTMENT PROTECTIVE MEASURES TEAMS REPRESENTATIVE HOME/PAGER/RADIO/CELL NUMBERS

| Team One | Home # | Radio/Cell# | Other |
|--|--------|-------------|-------|
| Wyatte Golson | | | |
| Calvin Lampkin | | | |
| Team Two | | | |
| Roger Phipps | | | |
| Japhell Williams | | | |
| Team Three | | | |
| Mitch Mosley | | | |
| Rex McDowell | | | |
| Team Four | | | |
| James White | | | |
| Lewis Baswell | | | |
| Thomas Ilias | | | |
| Team Five | | | |
| Mike Nobles | | | |
| Terry Teets | | | |
| Team Six | | | |
| Shawn Ellis | | | |
| Ray Brock | | | |
| Team Seven | | | |
| Eric Threatt | | | |
| Billy Taylor | | | |
| Team Eight | | | |
| Henry Harrison | | | |
| Danny Heckman | | | |
| Team Nine | | | |
| Dave Wright | | | |
| David Parker (PA) | | | |
| John Edwards | | | |
| Rod Keller | | | |
| Team Ten | | | |
| Billy Bailey | | | |
| Don Reed | | | |
| Team Eleven | | | |
| Chuck Peterson, III | | | |
| John Miller | | | |
| Team Twelve | | | |
| Eddie Flynn | | | |
| Jeff Hadley | | | |
| Daniel Clemmons | | | |
| Team Thirteen | | | |
| Frank Golson | | | |
| Bob Pilgrim | | | |
| Team Fourteen | | | |
| Alex Smith | | | |
| Mark Daniel | | | |
| Team Fifteen | | | |
| Gerald Richard | | | |
| Buddy Davis | | | |
| Team Sixteen | | | |
| Ed Domini | | | |
| Don Darbonne | | | |
| Team Seventeen | | | |
| David Parker (PL) | | | |
| Charlie Freeman | | | |
| Leonard Smith | | | |
| Alternates | | | |
| Remaining Employees On Extra Duty Roster | | | |
| | | | |
| | | | |

MAINTENANCE PROTECTIVE MEASURES TEAMS SUPPLIES CHECKLIST

Protective Measures Checklist and Instructions
Protective Measures Teams List and Contact Information
FISH Site Plans
Asbestos Location Information
Compensatory Time Record Forms
Pen, Pencil and Clipboard
Keys to Schools
Hardhat w/ Attachable Head Lamp
Digital Camera
Tape Measure
Barricade Tape
Extension Ladder
First Aid Kit
Fire Extinguisher
S.D.E.C. Stencil
Spray Paint
Raincoats
Flashlight
Hand Sanitizer

DAMAGE REPAIR TEAMS MASTER SUPPLIES LIST

| <u>QUANTITY</u> | <u>ITEM</u> |
|-----------------|--------------------------------------|
| 100 | Raincoats |
| 10 | Galoshes |
| 7 | 24' Extension Ladders |
| 3 | Fiberglass Extension Ladders |
| 43 | Flashlights (10-9V Type) |
| 10 | Lantern Style Flashlights |
| 16 qts. | Oil (2-Cycle) |
| 8 qts. | Bar Oil |
| 75 rolls | Yellow Barricade Tape |
| 32 | First Aid Kits |
| 9 case s | Gatorade |
| 63 rolls | Polyethelene (6 mil) |
| 31 rolls | Duct Tape |
| 90 pairs | Gloves |
| 15 packs | Film |
| 3 cases | Insect Repellant |
| 750' | Nylon Rope |
| 100 | Dust Masks |
| 72 | "D" Cell Batteries |
| 25 | 6-Volt Heavy Duty Batteries |
| 4 | Hammers |
| 1 | Large Ice Chest (48 qt.) |
| 25 | Bottled Water (1 gallon containers) |
| 4 | Vehicle Tow Straps |
| 1000 | Empty Re-usable Sandbags |
| 200 sheets | ½" CDX Plywood |
| 1000 | 1 ½" Tapcon Screws (Hexhead) |
| 1000 | 2 ½" Tapcon Screws (Hexhead) |
| 100 pieces | 2 x 4 Lodgepole |
| 100 pieces | 1 x 4 #2 Yellow Pine |
| 10 | 2 x 4 x 8 |
| 50 rolls | 15# Felt |
| 2 cases | NP – 1 Caulk |
| 20 squares | Desert Tan Shingles |
| 50# | Nails 8d duplex |
| 100# | Roofing Nails 7/8" 2-50# Boxes |
| 100# | Nails, Felt Simplex 2-50# Boxes |

DAMAGE REPAIR TEAMS EQUIPMENT LIST

| <u>QUANTITY</u> | <u>ITEM</u> |
|-----------------|------------------------------------|
| 17 | Chainsaws |
| 13 | Gas Powered Generators (3500 Watt) |
| 10 | Gas Cans |
| 9 | Wheel Barrows |
| 16 | Flat Shovels |
| 19 | Rakes |
| 7 | Pitchforks |
| 5 | Axes |
| 1 | Limb/Pruning Saw |
| 3 | Spare Chainsaw Chains |
| 10 | Mobile Flood Lights w/ stands |
| 1 | Crowbar |
| 1 | Bold Cutter |
| 10 | Portable Halogen Lamps |
| 10 | Wet/Dry Vacuums |
| 10 | Water Coolers (2 gallon) |
| 10 | Cameras |
| 50 pair | Safety Glasses |
| 5 | Claw Hammers |



Escambia County
School District

Escambia County Florida



Maintenance Department

Hurricane Preparedness Plan

Chapter Three

Forms

PROTECTIVE MEASURES CHECKLIST INSTRUCTIONS

The purpose of the Protective Measures Checklist (PMC) is to identify appropriate emergency measures that will protect life, property and restore a safe and healthy environment as quickly as possible. The PMC is designed to assist in quickly assessing the conditions of a specific facility. The assessment will be performed by the Maintenance Protective Measures Teams immediately when it is safe to access the facility.

Please note the location of problem areas in the space provided. Use FISH building and room numbers whenever possible. All damaged trees and other hazards should be marked with barricade tape.

Emergency/safety to life situations will be relayed by radio to the Maintenance Control Center and the complete checklist will be delivered to the Control Center as soon as possible.

PROTECTIVE MEASURES CHECKLIST

FACILITY NAME: _____

DATE: _____

TEAM MEMBER: _____

EVENT: _____

*****IF THERE IS EVIDENCE OF EMINENT DANGER AT SITE BEING INSPECTED, DO NOT ENTER CAMPUS AND NOTIFY DIRECTOR AND/OR ASSISTANT DIRECTOR IMMEDIATELY.*****

****PICTURES OF ALL DOCUMENTED DAMAGES ARE REQUIRED.****

- A. School Sign Damaged? Yes No Picture of School Sign Taken for ID Purposes
- B. No Damage to Facility
- C. **Gas Odor Present** Yes No **If YES, DO NOT enter & contact Director/Asst. Director immediately.**

Gas Line Damage:

| | Bldg. # | Location |
|---|---------|----------|
| <input type="checkbox"/> Gas Meter Damage | _____ | _____ |
| <input type="checkbox"/> Underground Gas Piping Exposed | _____ | _____ |
| <input type="checkbox"/> Underground Gas Piping Damaged | _____ | _____ |

- D. **Exterior Damages:**
- | | Bldg. # | Location |
|---|---------|----------|
| <input type="checkbox"/> Exterior Water Pipe Burst | _____ | _____ |
| <input type="checkbox"/> Exterior Sewage Back-Up | _____ | _____ |
| <input type="checkbox"/> Sewage Plants Down | _____ | _____ |
| <input type="checkbox"/> Electrical Aerial Wiring Down | _____ | _____ |
| <input type="checkbox"/> Electrical Panels Down | _____ | _____ |
| <input type="checkbox"/> # of Lighting (Poles, Fixtures): | _____ | _____ |
| <input type="checkbox"/> # of Exterior Windows Damaged: | _____ | _____ |
| <input type="checkbox"/> # of Exterior Doors Damaged: | _____ | _____ |
| <input type="checkbox"/> Exterior Siding Damage | _____ | _____ |
| <input type="checkbox"/> Exterior Siding Missing | _____ | _____ |
| <input type="checkbox"/> Major Covered Walk Damage | _____ | _____ |
| <input type="checkbox"/> Minor Covered Walk Damage | _____ | _____ |
| <input type="checkbox"/> Major Awning Damage | _____ | _____ |
| <input type="checkbox"/> Minor Awning Damage | _____ | _____ |
| <input type="checkbox"/> Major Ramp Damage | _____ | _____ |
| <input type="checkbox"/> Minor Ramp Damage | _____ | _____ |
| <input type="checkbox"/> Major Landing Damage | _____ | _____ |
| <input type="checkbox"/> Minor Landing Damage | _____ | _____ |
| <input type="checkbox"/> Major Step Damage | _____ | _____ |
| <input type="checkbox"/> Minor Step Damage | _____ | _____ |
| <input type="checkbox"/> Major Washouts | _____ | _____ |
| <input type="checkbox"/> Minor Washouts | _____ | _____ |
| <input type="checkbox"/> Major Fencing Damage | _____ | _____ |
| <input type="checkbox"/> Minor Fencing Damage | _____ | _____ |

PROTECTIVE MEASURES CHECKLIST

FACILITY NAME: _____ **DATE:** _____

EVENT NAME: _____

D. Exterior Damages: (Continued)

| | Bldg. # | Location |
|--|---------|----------|
| <input type="checkbox"/> # of Trees Down: _____ | _____ | _____ |
| <input type="checkbox"/> # of Trees Uprooted: _____ | _____ | _____ |
| <input type="checkbox"/> # of Trees w/ Limb Hangers: _____ | _____ | _____ |
| <input type="checkbox"/> Flag Pole Damage | _____ | _____ |
| <input type="checkbox"/> Playground Equipment Damage | _____ | _____ |
| <input type="checkbox"/> Mail Box Damaged | _____ | _____ |
| <input type="checkbox"/> Major Roof Damage | _____ | _____ |
| <input type="checkbox"/> Minor Roof Damage | _____ | _____ |
| <input type="checkbox"/> # of Damaged Roof Top HVAC Units: _____ | _____ | _____ |
| <input type="checkbox"/> # of Missing Roof Top HVAC Units: _____ | _____ | _____ |
| <input type="checkbox"/> # of Damaged Skylights: _____ | _____ | _____ |
| <input type="checkbox"/> # of Missing Skylights: _____ | _____ | _____ |
| <input type="checkbox"/> # of Damaged Roof Top Vents: _____ | _____ | _____ |
| <input type="checkbox"/> # of Missing Roof Top Vents: _____ | _____ | _____ |

E. Interior Damages:

| | | | |
|--------------------------------|------------------------------|-----------------------------|--|
| Gas Odor Present Inside | <input type="checkbox"/> Yes | <input type="checkbox"/> No | If YES, <u>DO NOT</u> enter & contact Director/Asst. Director immediately |
| Total Power Restored? | <input type="checkbox"/> Yes | <input type="checkbox"/> No | |
| Partial Power? | <input type="checkbox"/> Yes | <input type="checkbox"/> No | |

Bldg. # Location (Room #'s)

Restored Power Location: _____

| | |
|--|--|
| <input type="checkbox"/> Walk-In Cooler/Freezer Damage | _____ |
| <input type="checkbox"/> Walk-In Cooler/Freezer Temperature Checked: | Freezer: _____ Cooler: _____ |
| <input type="checkbox"/> Fire Alarm Condition | Working? <input type="checkbox"/> Yes <input type="checkbox"/> No |
| | Showing Trouble or Alarm? <input type="checkbox"/> Yes <input type="checkbox"/> No If yes, notify Electronics Immediately. |

Bldg. # Location (Room #'s)

| | |
|---|-------|
| <input type="checkbox"/> # of Lighting Fixtures Down: _____ | _____ |
| <input type="checkbox"/> # of Conduits Down/Damaged: _____ | _____ |
| <input type="checkbox"/> # of EL Panels Down/Damaged: _____ | _____ |
| <input type="checkbox"/> Interior Water Pipe Burst | _____ |
| <input type="checkbox"/> Interior Sewage Back-up | _____ |
| <input type="checkbox"/> Major Structural | _____ |
| <input type="checkbox"/> Minor Structural | _____ |

PROTECTIVE MEASURES CHECKLIST

FACILITY NAME: _____

DATE: _____

EVENT NAME: _____

E. Interior Damages: Continued

Bldg. # Location

Walls Damaged _____

of Doors Damaged: _____

of Windows Broken: _____

of Windows Damaged: _____

Major Water Damage Explain: _____

Minor Water Damage Explain: _____

F. Additional Information Only

DAILY ACTIVITY REPORT INTRUCTIONS

This report should be completed daily for all storm related work. The Supervisor should complete and sign the form and report to the office daily.

DATE: Date the work was done.

LOCATION: School/Cost Center Name

BUILDING #: Must be completed on every report.

TASK: Brief description of work.

DISASTER NO.: Project application ID#. Will be provided by Director.

DSR #: Will be provided by Director.

WORK ORDER #: Maintenance Department work order number.

PIR #: Property Incident Report Claim Number

LABOR: Show start and finish times of work; regular and overtime hours with regular and overtime labor rate. This rate of pay should include longevity pay.

EQUIPMENT:

HR/MI – Number of hours equipment was used or mileage driven.

RATE – FEMA reimbursement rate (see FEMA G.2 Numeric Cost Code Listing).

APPLICANT OWNED OR NAME OF LESSOR – Show School District of Escambia County if owned by School District or vendor name if equipment is leased.

DESCRIPTION: List type of equipment using FEMA G.2 Numeric Cost Code Listing.

MATERIALS: List each item used on that building.

SUPERVISOR: Signature is necessary.

DAILY ACTIVITY REPORT

DATE: _____
 LOCATION: _____
 BUILDING #: _____
 TASK: _____

DISASTER NO. _____
 PA.ID.# _____
 DSR # _____
 WORK ORDER # _____
 PIR # _____

| LABOR | | | | | | |
|-------|--------|------|----|------|-----------|-----------|
| Hours | | Rate | | Name | Job Title | Extension |
| Start | Finish | Reg. | OT | | | |
| | | | | | | |
| | | | | | | |
| | | | | | | |
| | | | | | | |
| | | | | | | |
| | | | | | | |
| | | | | | | |
| | | | | | | |
| | | | | | | |

| EQUIPMENT | | | | |
|-----------|------|-----------------------------------|---------------------------------|-----------|
| HR/MI | Rate | Applicant Owned or Name of Lessor | Description (CY, TON, HP, ETC.) | Extension |
| | | | | |
| | | | | |
| | | | | |
| | | | | |
| | | | | |

| MATERIALS | | | | | |
|-----------|------|-------------|---------|-------|-----------|
| Quantity | Unit | Description | P. O. # | Price | Extension |
| | | | | | |
| | | | | | |
| | | | | | |
| | | | | | |
| | | | | | |
| | | | | | |

| | | |
|--------------------------|------------------------|--------------------|
| Supervisor: _____ | Director: _____ | Date: _____ |
|--------------------------|------------------------|--------------------|

Original: School/Department
 Copy: Risk Management Department
 Disaster Recovery Coordinator

FEMA's Schedule of Equipment Rates

DEPARTMENT OF HOMELAND SECURITY
EMERGENCY PREPAREDNESS AND RESPONSE DIRECTORATE
RECOVERY DIVISION
PUBLIC ASSISTANCE BRANCH
WASHINGTON, D.C. 20472

The rates on this Schedule of Equipment Rates are for applicant-owned equipment in good mechanical condition, complete with all required attachments. Each rate covers all costs eligible under the Robert T. Stafford Disaster Relief and Emergency Assistance Act, 42 U.S.C. § 5121, et seq., for ownership and operation of equipment, including depreciation, overhead, all maintenance, field repairs, fuel, lubricants, tires, OSHA equipment and other costs incident to operation. Standby equipment costs are not eligible.

Equipment must be in actual operation performing eligible work in order for reimbursement to be eligible. LABOR COSTS OF OPERATOR ARE NOT INCLUDED in the rates and should be approved separately from equipment costs.

Information regarding the use of the Schedule is contained in 44 CFR § 206.228 *Allowable Costs*. Rates for equipment not listed will be furnished by FEMA upon request. Any appeals shall be in accordance with 44 CFR § 206.206 *Appeals*.

THESE RATES ARE APPLICABLE TO MAJOR DISASTERS AND EMERGENCIES DECLARED BY THE PRESIDENT ON OR AFTER AUGUST 28, 2005.

| Cost Code | Equipment | Specification | Capacity/Size | HP | Notes | Unit | Rate |
|-----------|-----------------------------|----------------------|---------------|--------|--|------|---------|
| 8490 | Aerial Lift, Self-Propelled | Max. Platform Height | 37 Ft | to 15 | Articulated, Telescoping, Scissor. | hour | \$5.70 |
| 8491 | Aerial Lift, Self-Propelled | Max. Platform Height | 60 Ft | to 30 | Articulated, Telescoping, Scissor. | hour | \$11.80 |
| 8492 | Aerial Lift, Self-Propelled | Max. Platform Height | 70 Ft | to 50 | Articulated, Telescoping, Scissor. | hour | \$21.40 |
| 8493 | Aerial Lift, Self-Propelled | Max. Platform Height | 125 Ft | to 85 | Articulated and Telescoping. | hour | \$38.50 |
| 8494 | Aerial Lift, Self-Propelled | Max. Platform Height | 150 Ft | to 130 | Articulated and Telescoping. | hour | \$60.00 |
| 8486 | Aerial Lift, Truck Mntd | Max. Platform Height | 25 Ft | | Articulated and Telescoping. | hour | \$5.40 |
| 8487 | Aerial Lift, Truck Mntd | Max. Platform Height | 50 Ft | | Articulated and Telescoping. | hour | \$9.00 |
| 8488 | Aerial Lift, Truck Mntd | Max. Platform Height | 75 Ft | | Articulated and Telescoping. | hour | \$19.10 |
| 8489 | Aerial Lift, Truck Mntd | Max. Platform Height | 100 Ft | | Articulated and Telescoping. | hour | \$36.00 |
| 8010 | Air Compressor | Air Delivery | 41 CFM | to 10 | Hoses included. | hour | \$1.55 |
| 8011 | Air Compressor | Air Delivery | 103 CFM | to 30 | Hoses included. | hour | \$4.75 |
| 8012 | Air Compressor | Air Delivery | 130 CFM | to 50 | Hoses included. | hour | \$9.25 |
| 8013 | Air Compressor | Air Delivery | 175 CFM | to 90 | Hoses included. | hour | \$17.20 |
| 8014 | Air Compressor | Air Delivery | 400 CFM | to 145 | Hoses included. | hour | \$24.80 |
| 8015 | Air Compressor | Air Delivery | 575 CFM | to 230 | Hoses included. | hour | \$40.50 |
| 8016 | Air Compressor | Air Delivery | 1100 CFM | to 355 | Hoses included. | hour | \$60.00 |
| 8017 | Air Compressor | Air Delivery | 1600 CFM | to 500 | Hoses included. | hour | \$82.00 |
| 8020 | Air Curtain Burner | | | to 50 | In ground burner. | hour | \$6.60 |
| 8021 | Air Curtain Burner | | | to 75 | In ground burner. | hour | \$7.60 |
| 8022 | Air Curtain Burner | | | to 100 | In ground burner. | hour | \$8.75 |
| 8023 | Air Curtain Burner | | | to 50 | Above ground burner. | hour | \$9.05 |
| 8024 | Air Curtain Burner | | | to 75 | Above ground burner. | hour | \$11.60 |
| 8025 | Air Curtain Burner | | | to 100 | Above ground burner. | hour | \$15.30 |
| 8040 | Ambulance | | | to 150 | | hour | \$21.50 |
| 8041 | Ambulance | | | to 210 | | hour | \$32.00 |
| 8060 | Auger, Portable | Hole Diameter | 16 In | to 6 | | hour | \$1.40 |
| 8061 | Auger, Portable | Hole Diameter | 18 In | to 13 | | hour | \$3.30 |
| 8062 | Auger, Tractor Mntd | Max. Auger Diameter | 36 In | to 13 | Includes digger, boom and mounting hardware. | hour | \$1.80 |
| 8063 | Auger, Truck Mntd | Max. Auger Size | 24 In | to 100 | Guardrail post driver. | hour | \$30.00 |
| 8070 | Automobile | | | to 130 | Transporting people. | mile | \$0.45 |
| 8071 | Automobile | | | to 130 | Transporting cargo. | hour | \$9.75 |
| 8072 | Automobile, Police | | | to 250 | Patrolling. | mile | \$0.55 |
| 8073 | Automobile, Police | | | to 250 | Stationary with engine running. | hour | \$14.35 |

FEMA's Schedule of Equipment Rates

| | | | | | | | |
|------|-----------------------------|-------------------|----------------|---------|--------------------------------|------|----------|
| 8110 | Barge, Deck | Size | 120'x30'x7.25' | | | hour | \$25.50 |
| 8111 | Barge, Deck | Size | 120'x45'x7' | | | hour | \$39.50 |
| 8112 | Barge, Deck | Size | 140'x45'x7' | | | hour | \$53.00 |
| 8113 | Barge, Deck | Size | 150'x45'x9' | | | hour | \$62.00 |
| 8115 | Barge, Hopper | Size | 200'x35'x12' | | Open | hour | \$46.50 |
| 8116 | Barge, Hopper | Size | 200'x35'x12' | | Closed | hour | \$54.00 |
| 8050 | Board, Arrow | | | to 8 | Trailer Mounted. | hour | \$3.10 |
| 8051 | Board, Message | | | to 5 | Trailer Mounted. | hour | \$8.55 |
| 8133 | Boat, Push | Size | 45'x21'x6' | to 435 | Flat hull. | hour | \$160.00 |
| 8134 | Boat, Push | Size | 54'x21'x6' | to 525 | Flat hull. | hour | \$182.00 |
| 8135 | Boat, Push | Size | 58'x24'x7.5' | to 705 | Flat hull. | hour | \$226.00 |
| 8136 | Boat, Push | Size | 64'x25'x8' | to 870 | Flat hull. | hour | \$270.00 |
| 8130 | Boat, Row | | | | Heavy duty. | hour | \$0.85 |
| 8131 | Boat, Runabout | Size | 13'x5' | to 50 | Outboard. | hour | \$14.45 |
| 8132 | Boat, Tender | Size | 14'x7' | to 100 | Inboard with 360 degree drive. | hour | \$27.00 |
| 8120 | Boat, Tow | Size | 55'x20'x5' | to 870 | Steel. | hour | \$204.00 |
| 8121 | Boat, Tow | Size | 60'x21'x5' | to 1050 | Steel. | hour | \$339.00 |
| 8122 | Boat, Tow | Size | 70'x30'x7.5' | to 1350 | Steel. | hour | \$480.00 |
| 8123 | Boat, Tow | Size | 120'x34'x8' | to 2000 | Steel. | hour | \$693.00 |
| 8140 | Boat, Tug | Length | 16 Ft | to 100 | | hour | \$31.00 |
| 8141 | Boat, Tug | Length | 18 Ft | to 175 | | hour | \$48.00 |
| 8142 | Boat, Tug | Length | 26 Ft | to 250 | | hour | \$63.00 |
| 8143 | Boat, Tug | Length | 40 Ft | to 380 | | hour | \$140.00 |
| 8144 | Boat, Tug | Length | 51 Ft | to 700 | | hour | \$207.00 |
| 8419 | Breaker, Pavement Hand-Held | Weight | 25~90 Lbs | | | hour | \$0.70 |
| 8420 | Breaker, Pavement | | | to 70 | | hour | \$29.50 |
| 8421 | Breaker, Pavement | | | to 105 | | hour | \$39.50 |
| 8422 | Breaker, Pavement | | | to 137 | | hour | \$52.00 |
| 8150 | Broom, Pavement | Broom Length | 72 In | to 20 | | hour | \$9.35 |
| 8151 | Broom, Pavement | Broom Length | 84 In | to 45 | | hour | \$13.95 |
| 8152 | Broom, Pavement | Broom Length | 96 In | to 100 | | hour | \$18.80 |
| 8153 | Broom, Pavement, Mntd | Broom Length | 72 In | to 18 | | hour | \$6.10 |
| 8154 | Broom, Pavement, Pull | Broom Length | 84 In | to 20 | | hour | \$7.60 |
| 8270 | Bucket, Clamshell | Capacity | 1.0 CY | | Includes teeth. | hour | \$4.10 |
| 8271 | Bucket, Clamshell | Capacity | 2.5 CY | | Includes teeth. | hour | \$7.25 |
| 8272 | Bucket, Clamshell | Capacity | 5.0 CY | | Includes teeth. | hour | \$12.00 |
| 8273 | Bucket, Clamshell | Capacity | 7.5 CY | | Includes teeth. | hour | \$16.40 |
| 8275 | Bucket, Dragline | Capacity | 2.0 CY | | | hour | \$3.30 |
| 8276 | Bucket, Dragline | Capacity | 5.0 CY | | | hour | \$6.95 |
| 8277 | Bucket, Dragline | Capacity | 10 CY | | | hour | \$11.55 |
| 8278 | Bucket, Dragline | Capacity | 14 CY | | | hour | \$13.50 |
| 8180 | Bus | | | to 150 | | hour | \$14.75 |
| 8181 | Bus | | | to 210 | | hour | \$22.30 |
| 8182 | Bus | | | to 300 | | hour | \$30.50 |
| 8190 | Chain Saw | Bar Length | 16 In | | | hour | \$1.55 |
| 8191 | Chain Saw | Bar Length | 25 In | | | hour | \$3.10 |
| 8192 | Chain Saw, Pole | Bar Size | 18 In | | | hour | \$1.65 |
| 8200 | Chipper, Brush | Chipping Capacity | 6 In | to 35 | Trailer Mounted. | hour | \$12.80 |
| 8201 | Chipper, Brush | Chipping Capacity | 12 In | to 65 | Trailer Mounted. | hour | \$17.70 |
| 8202 | Chipper, Brush | Chipping Capacity | 16 In | to 100 | Trailer Mounted. | hour | \$23.00 |
| 8203 | Chipper, Brush | Chipping Capacity | 18 In | to 125 | Trailer Mounted. | hour | \$29.00 |
| 8204 | Chipper, Brush | Chipping Capacity | 18 In | to 200 | Trailer Mounted. | hour | \$42.50 |
| 8205 | Chipper, Brush | Chipping Capacity | 19 In | to 300 | Trailer Mounted. | hour | \$59.00 |
| 8206 | Chipper, Brush | Chipping Capacity | 19 In | to 450 | Trailer Mounted. | hour | \$86.00 |
| 8207 | Chipper, Brush | | | to 650 | Trailer Mounted. | hour | \$130.00 |
| 8210 | Clamshell & Dragline | | | to 100 | Bucket not included in rate. | hour | \$71.00 |
| 8211 | Clamshell & Dragline | | | to 155 | Bucket not included in rate. | hour | \$95.00 |
| 8212 | Clamshell & Dragline | | | to 235 | Bucket not included in rate. | hour | \$131.00 |
| 8213 | Clamshell & Dragline | | | to 350 | Bucket not included in rate. | hour | \$178.00 |
| 8214 | Clamshell & Dragline | | | to 530 | Bucket not included in rate. | hour | \$250.00 |
| 8215 | Clamshell & Dragline | | | to 800 | Bucket not included in rate. | hour | \$343.00 |
| 8712 | Cleaner, Sewer/Catch Basin | Hopper Capacity | 5 CY | | Truck Mounted. | hour | \$18.80 |

FEMA's Schedule of Equipment Rates

| | | | | | | | |
|------|----------------------------|--------------------|------------|---------|---|------|----------|
| 8713 | Cleaner, Sewer/Catch Basin | Hopper Capacity | 14 CY | | Truck Mounted. | hour | \$23.30 |
| 8220 | Compactor | | | to 10 | | hour | \$8.70 |
| 8221 | Compactor | | | to 45 | | hour | \$15.30 |
| 8222 | Compactor | | | to 75 | | hour | \$22.70 |
| 8223 | Compactor | | | to 95 | | hour | \$28.00 |
| 8224 | Compactor | | | to 150 | | hour | \$43.50 |
| 8225 | Compactor | | | to 235 | | hour | \$73.00 |
| 8226 | Compactor | | | to 335 | | hour | \$119.00 |
| 8227 | Compactor | | | to 535 | | hour | \$234.00 |
| 8228 | Compactor, towed | | | to 15 | | hour | \$15.00 |
| 8229 | Compactor, towed | | | to 50 | | hour | \$39.00 |
| 8230 | Compactor, towed | | | to 100 | | hour | \$65.00 |
| 8500 | Crane | Max. Lift Capacity | 8 MT | to 80 | | hour | \$30.50 |
| 8501 | Crane | Max. Lift Capacity | 15 MT | to 150 | | hour | \$44.00 |
| 8502 | Crane | Max. Lift Capacity | 27 MT | to 200 | | hour | \$66.00 |
| 8503 | Crane | Max. Lift Capacity | 45 MT | to 300 | | hour | \$98.00 |
| 8504 | Crane | Max. Lift Capacity | 70 MT | to 350 | | hour | \$143.00 |
| 8505 | Crane | Max. Lift Capacity | 110 MT | to 450 | | hour | \$208.00 |
| 8496 | Crane, Truck Mntd | Max. Lift Capacity | 17600 Lbs | | | hour | \$22.50 |
| 8497 | Crane, Truck Mntd | Max. Lift Capacity | 33000 Lbs | | | hour | \$34.00 |
| 8498 | Crane, Truck Mntd | Max. Lift Capacity | 60000 Lbs | | | hour | \$55.00 |
| 8499 | Crane, Truck Mntd | Max. Lift Capacity | 120000 Lbs | | | hour | \$98.00 |
| 8195 | Cutter, Brush | Cutter Size | 8 ft | to 150 | | | \$76.00 |
| 8196 | Cutter, Brush | Cutter Size | 8 ft | to 190 | | | \$86.00 |
| 8197 | Cutter, Brush | Cutter Size | 10 ft | to 245 | | | \$96.00 |
| 8670 | Derrick, Hydraulic Digger | Max. Boom Length | 55 Ft | | Includes hydraulic pole alignment attachment. | hour | \$32.50 |
| 8671 | Derrick, Hydraulic Digger | Max. Boom Length | 75 Ft | | Includes hydraulic pole alignment attachment. | hour | \$34.50 |
| 8672 | Derrick, Hydraulic Digger | Max. Boom Length | 95 Ft | | Includes hydraulic pole alignment attachment. | hour | \$36.50 |
| 8580 | Distributor, Asphalt | Tank Capacity | 500 Gal | | Truck Mounted. Includes burners, insulated tank, and circulating spray bar. | hour | \$10.50 |
| 8581 | Distributor, Asphalt | Tank Capacity | 1000 Gal | | Truck Mounted. Includes burners, insulated tank, and circulating spray bar. | hour | \$15.60 |
| 8582 | Distributor, Asphalt | Tank Capacity | 4000 Gal | | Truck Mounted. Includes burners, insulated tank, and circulating spray bar. | hour | \$19.10 |
| 8250 | Dozer, Crawler | | | to 65 | | hour | \$31.00 |
| 8251 | Dozer, Crawler | | | to 105 | | hour | \$40.00 |
| 8252 | Dozer, Crawler | | | to 160 | | hour | \$55.00 |
| 8253 | Dozer, Crawler | | | to 245 | | hour | \$79.00 |
| 8254 | Dozer, Crawler | | | to 375 | | hour | \$124.00 |
| 8255 | Dozer, Crawler | | | to 565 | | hour | \$200.00 |
| 8256 | Dozer, Crawler | | | to 850 | | hour | \$344.00 |
| 8260 | Dozer, Wheel | | | to 260 | | hour | \$55.00 |
| 8261 | Dozer, Wheel | | | to 335 | | hour | \$68.00 |
| 8262 | Dozer, Wheel | | | to 445 | | hour | \$86.00 |
| 8263 | Dozer, Wheel | | | to 615 | | hour | \$126.00 |
| 8280 | Excavator, Hydraulic | Bucket Capacity | 0.5 CY | to 45 | Crawler, Truck & Wheel. Includes bucket. | hour | \$21.90 |
| 8281 | Excavator, Hydraulic | Bucket Capacity | 1.0 CY | to 90 | Crawler, Truck & Wheel. Includes bucket. | hour | \$37.50 |
| 8282 | Excavator, Hydraulic | Bucket Capacity | 1.5 CY | to 160 | Crawler, Truck & Wheel. Includes bucket. | hour | \$64.00 |
| 8283 | Excavator, Hydraulic | Bucket Capacity | 2.5 CY | to 265 | Crawler, Truck & Wheel. Includes bucket. | hour | \$104.00 |
| 8284 | Excavator, Hydraulic | Bucket Capacity | 4.5 CY | to 420 | Crawler, Truck & Wheel. Includes bucket. | hour | \$163.00 |
| 8285 | Excavator, Hydraulic | Bucket Capacity | 7.5 CY | to 650 | Crawler, Truck & Wheel. Includes bucket. | hour | \$255.00 |
| 8286 | Excavator, Hydraulic | Bucket Capacity | 12 CY | to 1000 | Crawler, Truck & Wheel. Includes bucket. | hour | \$404.00 |
| 8240 | Feeder, Grizzly | | | to 35 | | hour | \$19.20 |
| 8241 | Feeder, Grizzly | | | to 55 | | hour | \$29.00 |
| 8242 | Feeder, Grizzly | | | to 75 | | hour | \$45.50 |

FEMA's Schedule of Equipment Rates

| | | | | | | | |
|------|------------------------|--------------------|-----------|---------|--|------|----------|
| 8300 | Fork Lift | Capacity | 6000 Lbs | to 60 | | hour | \$9.90 |
| 8301 | Fork Lift | Capacity | 12000 Lbs | to 90 | | hour | \$14.45 |
| 8302 | Fork Lift | Capacity | 18000 Lbs | to 140 | | hour | \$23.90 |
| 8303 | Fork Lift | Capacity | 50000 Lbs | to 215 | | hour | \$42.50 |
| 8310 | Generator | Prime Output | 5.5 KW | to 10 | | hour | \$3.60 |
| 8311 | Generator | Prime Output | 16 KW | to 25 | | hour | \$8.45 |
| 8312 | Generator | Prime Output | 43 KW | to 65 | | hour | \$18.10 |
| 8313 | Generator | Prime Output | 85 KW | to 125 | | hour | \$28.50 |
| 8314 | Generator | Prime Output | 140 KW | to 200 | | hour | \$40.50 |
| 8315 | Generator | Prime Output | 210 KW | to 300 | | hour | \$59.00 |
| 8316 | Generator | Prime Output | 280 KW | to 400 | | hour | \$76.00 |
| 8317 | Generator | Prime Output | 350 KW | to 500 | | hour | \$94.00 |
| 8318 | Generator | Prime Output | 530 KW | to 750 | | hour | \$137.00 |
| 8319 | Generator | Prime Output | 710 KW | to 1000 | | hour | \$179.00 |
| 8320 | Generator | Prime Output | 1100 KW | to 1500 | | hour | \$274.00 |
| 8321 | Generator | Prime Output | 1500 KW | to 2000 | | hour | \$369.00 |
| 8322 | Generator | Prime Output | 1900 KW | to 2500 | | hour | \$457.00 |
| 8323 | Generator | Prime Output | 2400 KW | to 3000 | | hour | \$547.00 |
| 8755 | Golf Cart | Capacity | 2 person | | | hour | \$2.55 |
| 8330 | Graders | Moldboard Size | 8 Ft | to 50 | Includes Rigid and Articulate equipment. | hour | \$23.90 |
| 8331 | Graders | Moldboard Size | 10 Ft | to 100 | Includes Rigid and Articulate equipment. | hour | \$32.00 |
| 8332 | Graders | Moldboard Size | 12 Ft | to 150 | Includes Rigid and Articulate equipment. | hour | \$43.00 |
| 8333 | Graders | Moldboard Size | 14 Ft | to 225 | Includes Rigid and Articulate equipment. | hour | \$60.00 |
| 8350 | Hose, Discharge | Diameter | 3 In | | Per 25 foot length. Includes couplings. | hour | \$0.15 |
| 8351 | Hose, Discharge | Diameter | 4 In | | Per 25 foot length. Includes couplings. | hour | \$0.20 |
| 8352 | Hose, Discharge | Diameter | 6 In | | Per 25 foot length. Includes couplings. | hour | \$0.35 |
| 8353 | Hose, Discharge | Diameter | 8 In | | Per 25 foot length. Includes couplings. | hour | \$0.55 |
| 8354 | Hose, Discharge | Diameter | 12 In | | Per 25 foot length. Includes couplings. | hour | \$1.15 |
| 8355 | Hose, Discharge | Diameter | 16 In | | Per 25 foot length. Includes couplings. | hour | \$1.90 |
| 8356 | Hose, Suction | Diameter | 3 In | | Per 25 foot length. Includes couplings. | hour | \$0.20 |
| 8357 | Hose, Suction | Diameter | 4 In | | Per 25 foot length. Includes couplings. | hour | \$0.30 |
| 8358 | Hose, Suction | Diameter | 6 In | | Per 25 foot length. Includes couplings. | hour | \$0.50 |
| 8359 | Hose, Suction | Diameter | 8 In | | Per 25 foot length. Includes couplings. | hour | \$0.85 |
| 8360 | Hose, Suction | Diameter | 12 In | | Per 25 foot length. Includes couplings. | hour | \$1.80 |
| 8361 | Hose, Suction | Diameter | 16 In | | Per 25 foot length. Includes couplings. | hour | \$3.20 |
| 8517 | Jackhammer (Dry) | Weight Class | 25-45 Lbs | | | hour | \$1.10 |
| 8518 | Jackhammer (Wet) | Weight Class | 30-55 Lbs | | | hour | \$1.20 |
| 8380 | Loader, Crawler | Bucket Capacity | 0.5 CY | to 32 | Includes bucket. | hour | \$13.90 |
| 8381 | Loader, Crawler | Bucket Capacity | 1 CY | to 60 | Includes bucket. | hour | \$23.50 |
| 8382 | Loader, Crawler | Bucket Capacity | 2 CY | to 118 | Includes bucket. | hour | \$46.50 |
| 8383 | Loader, Crawler | Bucket Capacity | 3 CY | to 178 | Includes bucket. | hour | \$73.00 |
| 8384 | Loader, Crawler | Bucket Capacity | 4 CY | to 238 | Includes bucket. | hour | \$101.00 |
| 8385 | Loader, Crawler | Bucket Capacity | 5 CY | to 300 | Includes bucket. | hour | \$135.00 |
| 8540 | Loader, Skid-Steer | Operating Capacity | 1000 Lbs | to 35 | | hour | \$12.50 |
| 8541 | Loader, Skid-Steer | Operating Capacity | 2000 Lbs | to 65 | | hour | \$17.40 |
| 8542 | Loader, Skid-Steer | Operating Capacity | 3000 Lbs | to 85 | | hour | \$20.10 |
| 8543 | Loader, Skid-Steer | Operating Capacity | 4000 Lbs | to 94 | | hour | \$21.00 |
| 8401 | Loader, Tractor, Wheel | | | to 81 | | hour | \$17.80 |
| 8390 | Loader, Wheel | Bucket Capacity | 0.5 CY | to 38 | | hour | \$13.25 |
| 8391 | Loader, Wheel | Bucket Capacity | 1 CY | to 60 | | hour | \$17.10 |
| 8392 | Loader, Wheel | Bucket Capacity | 2 CY | to 105 | | hour | \$25.50 |
| 8393 | Loader, Wheel | Bucket Capacity | 3 CY | to 152 | | hour | \$34.00 |

FEMA's Schedule of Equipment Rates

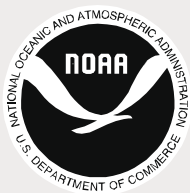
| | | | | | | | |
|------|-------------------------------|------------------------|----------|--------|---------------------------------------|------|----------|
| 8394 | Loader, Wheel | Bucket Capacity | 4 CY | to 200 | | hour | \$43.50 |
| 8395 | Loader, Wheel | Bucket Capacity | 5 CY | to 250 | | hour | \$53.00 |
| 8396 | Loader, Wheel | Bucket Capacity | 6 CY | to 305 | | hour | \$65.00 |
| 8397 | Loader, Wheel | Bucket Capacity | 7 CY | to 360 | | hour | \$79.00 |
| 8398 | Loader, Wheel | Bucket Capacity | 8 CY | to 415 | | hour | \$92.00 |
| 8399 | Loader, Wheel | Bucket Capacity | 9 CY | to 470 | | hour | \$105.00 |
| 8400 | Loader, Wheel | Bucket Capacity | 10 CY | to 530 | | hour | \$122.00 |
| 8570 | Loader-Backhoe, Wheel | Loader Bucket Capacity | 0.5 CY | to 40 | Loader and Backhoe Buckets included. | hour | \$12.25 |
| 8571 | Loader-Backhoe, Wheel | Loader Bucket Capacity | 1 CY | to 70 | Loader and Backhoe Buckets included. | hour | \$19.70 |
| 8572 | Loader-Backhoe, Wheel | Loader Bucket Capacity | 1.5 CY | to 95 | Loader and Backhoe Buckets included. | hour | \$28.50 |
| 8573 | Loader-Backhoe, Wheel | Loader Bucket Capacity | 1.75 CY | to 115 | Loader and Backhoe Buckets included. | hour | \$36.50 |
| 8410 | Mixer, Concrete Portable | Batching Capacity | 10 Cft | | | hour | \$2.90 |
| 8411 | Mixer, Concrete Portable | Batching Capacity | 16 Cft | | | hour | \$4.25 |
| 8412 | Mixer, Concrete, Trailer Mntd | Batching Capacity | 11 Cft | to 10 | | hour | \$9.35 |
| 8413 | Mixer, Concrete, Trailer Mntd | Batching Capacity | 16 Cft | to 25 | | hour | \$14.70 |
| 8075 | Motorcycle, Police | | | | | mile | \$0.40 |
| 8633 | Mulcher, Trailer Mntd | Working Capacity | 7 TPH | to 35 | | hour | \$10.10 |
| 8634 | Mulcher, Trailer Mntd | Working Capacity | 10 TPH | to 55 | | hour | \$15.00 |
| 8635 | Mulcher, Trailer Mntd | Working Capacity | 20 TPH | to 120 | | hour | \$22.60 |
| 8430 | Paver, Asphalt | | | to 50 | Includes wheel and crawler equipment. | hour | \$41.50 |
| 8431 | Paver, Asphalt | | | to 75 | Includes wheel and crawler equipment. | hour | \$63.00 |
| 8432 | Paver, Asphalt | | | to 125 | Includes wheel and crawler equipment. | hour | \$97.00 |
| 8433 | Paver, Asphalt | | | to 175 | Includes wheel and crawler equipment. | hour | \$125.00 |
| 8434 | Paver, Asphalt | | | to 250 | Includes wheel and crawler equipment. | hour | \$151.00 |
| 8436 | Pick-up, Asphalt | | | to 110 | | hour | \$57.00 |
| 8437 | Pick-up, Asphalt | | | to 150 | | hour | \$82.00 |
| 8438 | Pick-up, Asphalt | | | to 200 | | hour | \$103.00 |
| 8439 | Pick-up, Asphalt | | | to 275 | | hour | \$145.00 |
| 8660 | Plow, Cable | Plow Depth | 18 in | to 30 | | hour | \$9.50 |
| 8661 | Plow, Cable | Plow Depth | 36 in | to 65 | | hour | \$19.30 |
| 8662 | Plow, Cable | Plow Depth | 48 in | to 110 | | hour | \$30.50 |
| 8450 | Plow, Grader Mntd | Width | to 10 Ft | | | hour | \$18.60 |
| 8451 | Plow, Grader Mntd | Width | to 14 Ft | | | hour | \$25.00 |
| 8452 | Plow, Truck Mntd | Width | to 15 Ft | | | hour | \$14.05 |
| 8453 | Plow, Truck Mntd | Width | to 15 Ft | | With leveling wing. | hour | \$20.40 |
| 8470 | Pump | | | to 3 | Hoses not included. | hour | \$2.70 |
| 8471 | Pump | | | to 6 | Hoses not included. | hour | \$3.70 |
| 8472 | Pump | | | to 10 | Hoses not included. | hour | \$5.05 |
| 8473 | Pump | | | to 15 | Hoses not included. | hour | \$6.00 |
| 8474 | Pump | | | to 25 | Hoses not included. | hour | \$8.60 |
| 8475 | Pump | | | to 40 | Hoses not included. | hour | \$11.25 |
| 8476 | Pump | | | to 60 | Hoses not included. | hour | \$16.70 |
| 8477 | Pump | | | to 95 | Hoses not included. | hour | \$24.60 |
| 8478 | Pump | | | to 140 | Hoses not included. | hour | \$26.50 |
| 8479 | Pump | | | to 200 | Hoses not included. | hour | \$31.50 |
| 8463 | Pump Extender | Length | 20 Ft | | | hour | \$1.25 |
| 8460 | Pump, W/O Power | Pump Size | 6 In | | | hour | \$2.30 |
| 8461 | Pump, W/O Power | Pump Size | 12 In | | | hour | \$3.00 |
| 8462 | Pump, W/O Power | Pump Size | 24 In | | | hour | \$7.15 |
| 8510 | Saw, Concrete | Blade Diameter | 14 In | to 14 | | hour | \$5.35 |
| 8511 | Saw, Concrete | Blade Diameter | 26 In | to 35 | | hour | \$12.60 |
| 8512 | Saw, Concrete | Blade Diameter | 48 In | to 65 | | hour | \$22.10 |
| 8513 | Saw, Rock | | | to 65 | | hour | \$29.00 |
| 8514 | Saw, Rock | | | to 90 | | hour | \$38.00 |
| 8515 | Saw, Rock | | | to 120 | | hour | \$52.00 |
| 8520 | Scraper | Scraper Capacity | 11 CY | to 175 | | hour | \$83.00 |
| 8521 | Scraper | Scraper Capacity | 16 CY | to 250 | | hour | \$109.00 |
| 8522 | Scraper | Scraper Capacity | 23 CY | to 365 | | hour | \$143.00 |
| 8523 | Scraper | Scraper Capacity | 34 CY | to 475 | | hour | \$173.00 |
| 8524 | Scraper | Scraper Capacity | 44 CY | to 600 | | hour | \$208.00 |

FEMA's Schedule of Equipment Rates

| | | | | | | | |
|------|---------------------------|---------------------|-------------------|--------|--|------|----------|
| 8560 | Snow Blower | Capacity | 2,000 Tph | to 400 | | hour | \$140.00 |
| 8561 | Snow Blower | Capacity | 2,500 Tph | to 500 | | hour | \$157.00 |
| 8562 | Snow Blower | Capacity | 3,500 Tph | to 600 | | hour | \$180.00 |
| 8550 | Snow Blower, Truck Mntd | Capacity | 600 Tph | to 75 | | hour | \$38.50 |
| 8551 | Snow Blower, Truck Mntd | Capacity | 1100 Tph | to 150 | | hour | \$60.00 |
| 8552 | Snow Blower, Truck Mntd | Capacity | 1600 Tph | to 250 | | hour | \$90.00 |
| 8553 | Snow Blower, Truck Mntd | Capacity | 2500 Tph | to 400 | | hour | \$128.00 |
| 8558 | Snow Thrower, Walk Behind | Cutting Width | 25 in | to 5 | | hour | \$12.80 |
| 8559 | Snow Thrower, Walk Behind | Cutting Width | 60 in | to 15 | | hour | \$16.30 |
| 8630 | Sprayer, Seed | Working Capacity | 750 Gal | to 30 | Trailer & truck mounted. | hour | \$10.70 |
| 8631 | Sprayer, Seed | Working Capacity | 1250 Gal | to 50 | Trailer & truck mounted. | hour | \$13.45 |
| 8632 | Sprayer, Seed | Working Capacity | 3500 Gal | to 115 | Trailer & truck mounted. | hour | \$22.40 |
| 8458 | Spreader, Chemical | Capacity | 5 CY | to 4 | Trailer & truck mounted. | hour | \$4.10 |
| 8423 | Spreader, Chip | Spread Hopper Width | 12.5 Ft | to 152 | | hour | \$50.00 |
| 8424 | Spreader, Chip | Spread Hopper Width | 16.5 Ft | to 215 | | hour | \$66.00 |
| 8425 | Spreader, Chip, Mntd | Hopper Size | 8 Ft | to 8 | Trailer & truck mounted. | hour | \$3.65 |
| 8455 | Spreader, Sand | Mounting | Tailgate, Chassis | | | hour | \$4.05 |
| 8456 | Spreader, Sand | Mounting | Dump Body | | | hour | \$5.65 |
| 8457 | Spreader, Sand | Mounting | Truck (10yd) | | | hour | \$7.90 |
| 8440 | Striper | Paint Capacity | 40 Gal | to 22 | | hour | \$12.90 |
| 8441 | Striper | Paint Capacity | 90 Gal | to 60 | | hour | \$19.10 |
| 8442 | Striper | Paint Capacity | 120 Gal | to 122 | | hour | \$38.00 |
| 8445 | Striper, Truck Mntd | Paint Capacity | 120 Gal | to 460 | | hour | \$69.00 |
| 8446 | Striper, Walk-behind | Paint Capacity | 12 Gal | | | hour | \$3.25 |
| 8157 | Sweeper, Pavement | | | to 110 | | hour | \$47.00 |
| 8158 | Sweeper, Pavement | | | to 150 | | hour | \$56.00 |
| 8159 | Sweeper, Pavement | | | to 200 | | hour | \$62.00 |
| 8590 | Trailer, Dump | Capacity | 20 CY | | Does not include Prime Mover. | hour | \$17.40 |
| 8591 | Trailer, Dump | Capacity | 30 CY | | Does not include Prime Mover. | hour | \$26.00 |
| 8592 | Trailer, Dump | Capacity | 40 CY | | Does not include Prime Mover. | hour | \$35.00 |
| 8600 | Trailer, Equipment | Capacity | 30 Tons | | | hour | \$9.90 |
| 8601 | Trailer, Equipment | Capacity | 40 Tons | | | hour | \$11.45 |
| 8602 | Trailer, Equipment | Capacity | 60 Tons | | | hour | \$13.70 |
| 8603 | Trailer, Equipment | Capacity | 120 Tons | | | hour | \$18.30 |
| 8640 | Trailer, Office | Trailer Size | 8' x 24' | | | hour | \$1.60 |
| 8641 | Trailer, Office | Trailer Size | 8' x 32' | | | hour | \$1.90 |
| 8642 | Trailer, Office | Trailer Size | 10' x 32' | | | hour | \$2.30 |
| 8610 | Trailer, Water | Tank Capacity | 4000 Gal | | Includes a centrifugal pump with sump and a rear spraybar. | hour | \$10.65 |
| 8611 | Trailer, Water | Tank Capacity | 6000 Gal | | Includes a centrifugal pump with sump and a rear spraybar. | hour | \$12.40 |
| 8612 | Trailer, Water | Tank Capacity | 10000 Gal | | Includes a centrifugal pump with sump and a rear spraybar. | hour | \$15.40 |
| 8613 | Trailer, Water | Tank Capacity | 14000 Gal | | Includes a centrifugal pump with sump and a rear spraybar. | hour | \$18.70 |
| 8650 | Trencher | | | to 35 | Walk-behind, Crawler & Wheel Mounted. Chain and Wheel. | hour | \$14.70 |
| 8651 | Trencher | | | to 85 | Walk-behind, Crawler & Wheel Mounted. Chain and Wheel. | hour | \$32.50 |
| 8652 | Trencher | | | to 115 | Walk-behind, Crawler & Wheel Mounted. Chain and Wheel. | hour | \$41.50 |
| 8653 | Trencher | | | to 175 | Walk-behind, Crawler & Wheel Mounted. Chain and Wheel. | hour | \$61.00 |
| 8290 | Trowel, Concrete | Diameter | 90 In | to 25 | | hour | \$11.70 |
| 8291 | Trowel, Concrete | Diameter | 100 In | to 38 | | hour | \$17.90 |
| 8810 | Truck, Bucket | | | | Add Flatbed Truck to Truck Mounted Aerial Lift. | | |

FEMA's Schedule of Equipment Rates

| | | | | | | | |
|------|-----------------------|-----------------|-----------|---------|---|------|----------|
| 8811 | Truck, Cleaning | | | | Add Flatbed Truck to Sewer Cleaner. | | |
| 8680 | Truck, Concrete Mixer | Mixer Capacity | 10 CY | to 255 | | hour | \$70.00 |
| 8681 | Truck, Concrete Mixer | Mixer Capacity | 13 CY | to 300 | | hour | \$81.00 |
| 8720 | Truck, Dump | Struck Capacity | 8 CY | to 210 | | hour | \$25.50 |
| 8721 | Truck, Dump | Struck Capacity | 10 CY | to 235 | | hour | \$28.00 |
| 8722 | Truck, Dump | Struck Capacity | 12 CY | to 255 | | hour | \$31.00 |
| 8723 | Truck, Dump | Struck Capacity | 18 CY | to 330 | | hour | \$46.50 |
| 8724 | Truck, Dump | Struck Capacity | 28 CY | to 400 | | hour | \$77.00 |
| 8725 | Truck, Dump | Struck Capacity | 40 CY | to 460 | | hour | \$85.00 |
| 8726 | Truck, Dump | Struck Capacity | 50 CY | to 620 | | hour | \$108.00 |
| 8690 | Truck, Fire | Pump Capacity | 1000 GPM | | | hour | \$53.00 |
| 8691 | Truck, Fire | Pump Capacity | 1250 GPM | | | hour | \$56.00 |
| 8692 | Truck, Fire | Pump Capacity | 1500 GPM | | | hour | \$71.00 |
| 8693 | Truck, Fire | Pump Capacity | 2000 GPM | | | hour | \$77.00 |
| 8700 | Truck, Flatbed | Maximum Gvw | 15000 Lbs | to 150 | | hour | \$16.40 |
| 8701 | Truck, Flatbed | Maximum Gvw | 25000 Lbs | to 180 | | hour | \$20.20 |
| 8702 | Truck, Flatbed | Maximum Gvw | 30000 Lbs | to 215 | | hour | \$26.50 |
| 8703 | Truck, Flatbed | Maximum Gvw | 45000 Lbs | to 250 | | hour | \$29.50 |
| 8704 | Truck, Flatbed | Maximum Gvw | 50000 Lbs | to 300 | | hour | \$38.00 |
| 8705 | Truck, Flatbed | | | to 375 | | hour | \$46.00 |
| 8706 | Truck, Flatbed | | | to 450 | | hour | \$53.00 |
| 8730 | Truck, Garbage | Capacity | 25 CY | to 255 | | hour | \$41.50 |
| 8731 | Truck, Garbage | Capacity | 32 CY | to 325 | | hour | \$50.00 |
| 8812 | Truck, Knuckle Boom | | | | Add Flatbed Truck to Truck Mounted Crane. | | |
| 8813 | Truck, Ladder | | | | Add Flatbed Truck to Truck Mounted Aerial Lift. | | |
| 8814 | Truck, Line | | | | Add Flatbed Truck to Hydraulic Digger Derrick. | | |
| 8800 | Truck, Pickup | | | to 130 | When transporting people. | mile | \$0.45 |
| 8801 | Truck, Pickup | | | to 130 | | hour | \$9.75 |
| 8802 | Truck, Pickup | | | to 180 | | hour | \$13.35 |
| 8803 | Truck, Pickup | | | to 230 | | hour | \$16.50 |
| 8804 | Truck, Pickup | | | to 280 | | hour | \$19.90 |
| 8790 | Truck, Tractor | | | to 210 | | hour | \$29.50 |
| 8791 | Truck, Tractor | | | to 265 | | hour | \$36.50 |
| 8792 | Truck, Tractor | | | to 310 | | hour | \$42.00 |
| 8793 | Truck, Tractor | | | to 350 | | hour | \$44.50 |
| 8780 | Truck, Water | Tank Capacity | 2500 Gal | to 175 | Include pump and rear spray system. | hour | \$27.50 |
| 8781 | Truck, Water | Tank Capacity | 4000 Gal | to 250 | Include pump and rear spray system. | hour | \$39.00 |
| 8620 | Tub Grinder | | | to 400 | | hour | \$78.00 |
| 8621 | Tub Grinder | | | to 500 | | hour | \$97.00 |
| 8622 | Tub Grinder | | | to 600 | | hour | \$110.00 |
| 8623 | Tub Grinder | | | to 700 | | hour | \$125.00 |
| 8624 | Tub Grinder | | | to 800 | | hour | \$144.00 |
| 8625 | Tub Grinder | | | to 900 | | hour | \$156.00 |
| 8626 | Tub Grinder | | | to 1000 | | hour | \$170.00 |
| 8753 | Vehicle, Recreational | | | to 10 | | hour | \$2.75 |
| 8750 | Vehicle, Small | | | to 30 | | hour | \$5.25 |
| 8760 | Vibrator, Concrete | | | to 4 | | hour | \$1.00 |
| 8761 | Vibrator, Concrete | | | to 8 | | hour | \$2.75 |
| 8770 | Welder, Portable | | | to 16 | Includes ground cable and lead cable. | hour | \$4.90 |
| 8771 | Welder, Portable | | | to 34 | Includes ground cable and lead cable. | hour | \$10.25 |
| 8772 | Welder, Portable | | | to 50 | Includes ground cable and lead cable. | hour | \$14.75 |
| 8773 | Welder, Portable | | | to 80 | Includes ground cable and lead cable. | hour | \$21.60 |



ATLANTIC HURRICANE TRACKING CHART

