

Ms. Aggie Bauer,  
Principal

Ms. Michelle Andersen,  
Assistant Principal

# WEEK AT A GLANCE

February 24-28, 2025

02/27 - T-Shirt for Technology \$1

03/04 - PTA meeting @ 6:15

3/5 - Spring Pictures

3/7 - K-2 STEAM Day

3/6 & 3/7 - 4th grade field trip

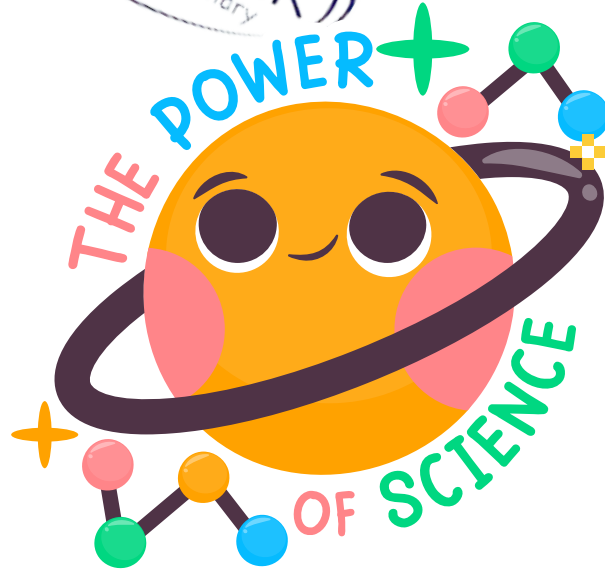
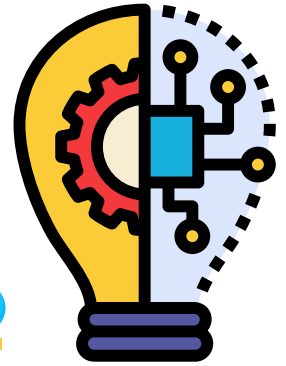
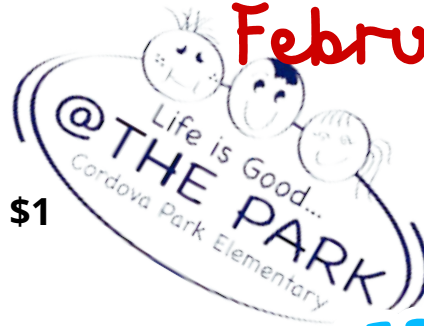
3/13 - 6th grade Haven field trip

3/10-3/14 -- Q3 5th grade science test

3/14 - 3-6 STEAM Day

3/17-3/21 -- SPRING BREAK

3/27 - T-SHIRT FOR TECHNOLOGY



**STEAM Days are quickly approaching! We need volunteers!**

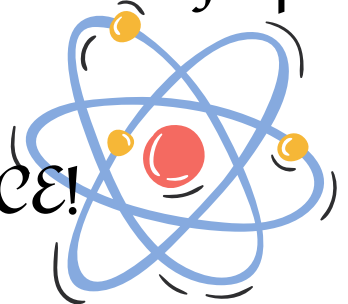
\*Grades K-2 will have STEAM day, March 7th from 8:30 - 1:00.

\*Grades 3-6 will have STEAM day, March 14th from 8:30-1:00.

We would love your help!. You can volunteer for a portion of the day, all day, or both days. Materials and instructions will be provided, along with lunch and a rest break. We cannot offer this amazing opportunity without YOU! Please go to the PTA Facebook page or the Cordova Park web page to find the Signup Genius link to volunteer.



**YOU MAKE A POSITIVE DIFFERENCE!**



# Don't Forget you \$1 !!!!

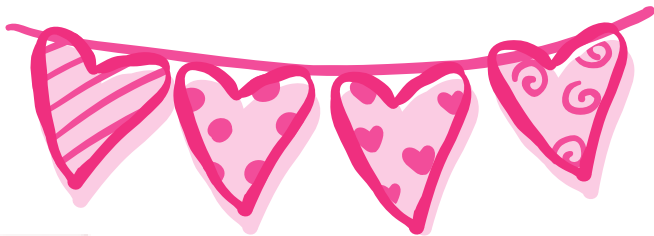
Our lunch room will be selling bags of chips and cookies for \$1 on Monday - Thursday.

On Friday, students can buy an ice cream for \$1. Parents will need to put money on their child's lunch account to purchase these items.



## Box Tops

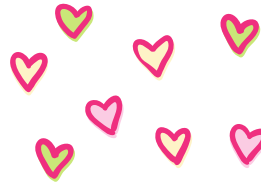
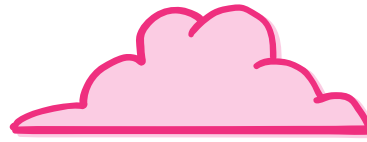
Help support our PE department by purchasing products that have Box Top label. You can scan your receipts for all proceeds to go to Cordova Park Elementary. All proceeds will support our PE department. Box Top for Education will send a check to our school for our PE department.



**FortifyFLORIDA**



FortifyFL is a suspicious activity reporting tool that allows you to instantly relay information to appropriate law enforcement agencies and school officials.



## HELP SUPPORT THE RONALD MCDONALD HOUSE

Cordova Park Elementary Pop-Tab Collection

Help support the Ronald McDonald House (RMH) Charities of NW Florida by donating the pop-tabs you pull off aluminum soda cans.

Collected pop-tabs are recycled, generating much-needed funds to support the RMH and the nearly 1,100 families they serve each year.

The RMH is a "home-away-from-home" for families with sick children. Funds received from pop-tabs typically add up to around \$5,000 annually – this money is used to pay the utility bills at the RMH.

Please start bringing in pop tabs.

We will have a collection bin in the main lobby and also outside the guidance counselor's office.

CPE will be competing with other local schools to see who can collect the most pop-tabs by the end of the school year!

