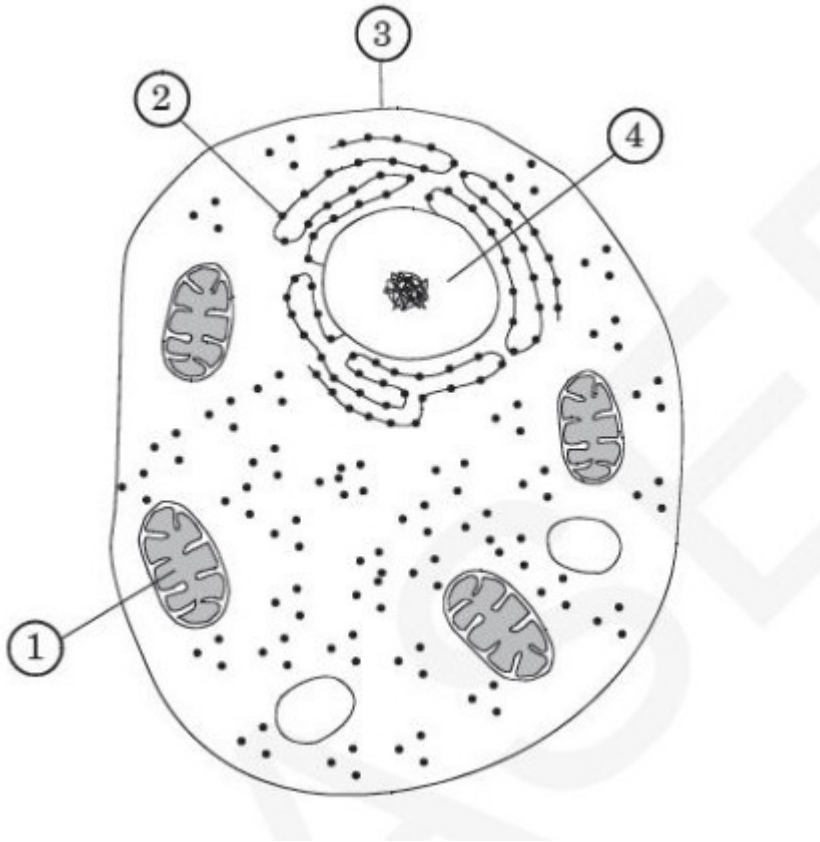


SC.912.L.14.3 – Cell Structure – Example 8 Answer

The diagram below represents a cell.



Which organelle is the site where amino acids are synthesized into proteins?

- A. 1
- B. 2
- C. 3
- D. 4

Answer

- B. 2

Structure 1 is a mitochondrion, Structure 2 is a ribosome, Structure 3 is the cell membrane and Structure 4 is the nucleus.