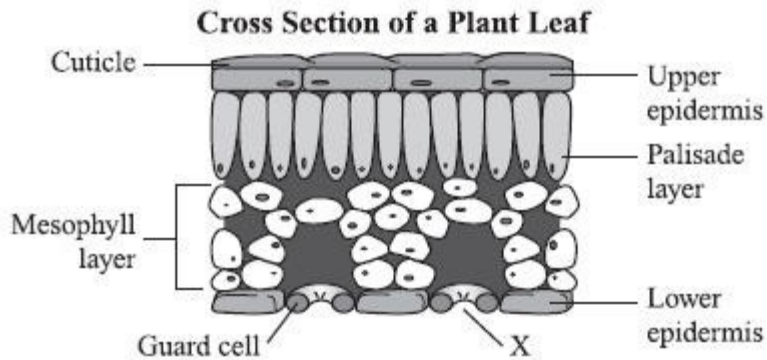


SC.912.L.14.7 – Plant Structure – Example 8 Answer

The diagram below shows a cross section of a plant leaf.



How does the structure marked X contribute to the survival of the plant?

- A. It allows the intake of gases necessary for photosynthesis.**
- B. It allows the intake of minerals necessary for plant growth.**
- C. It allows the intake of sunlight necessary for ATP production.**
- D. It allows the intake of sugars necessary for plant reproduction.**

Answer

A. It allows the intake of gases necessary for photosynthesis.

The stomata are the site of gas exchange in leaves, a process called transpiration. Carbon dioxide is taken in by plants and oxygen is given off.